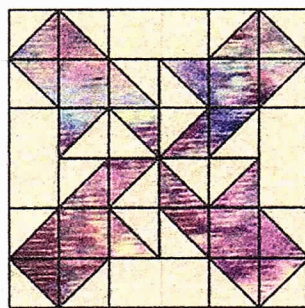


July 2016
Black & White

Mrs. Morgan's Choice

This makes a 12" block!

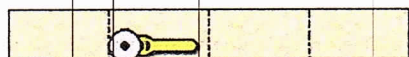


Please abide by the Terms and Conditions of use! :o)

** Preparing the Pieces and Sewing the Block **



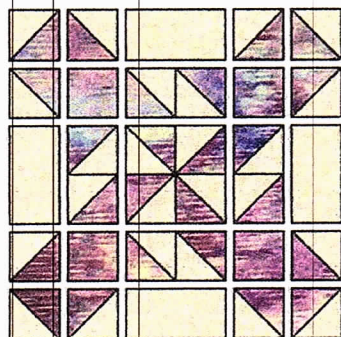
First mark and cut the Color 1 2-1/2" x 10" strip into four 2-1/2" squares...



Then mark and cut the Color 2 2-1/2" x 18" strip into four 2-1/2" x 4-1/2" rectangles...



Now speed piece the half squares, by stacking the Color 1 and Color 2 2-7/8" x 34-1/2" strips right sides together and all edges aligned. On the back of the top strip lightly mark the 2-7/8" square lines. Mark the diagonals as shown at left as well. Sew 1/4" above and below the marked diagonals, pivoting at the square lines. Cut apart on the marked diagonal lines, and on the square lines. This will give you twenty-four half squares. Press seam allowances towards the darker fabric...



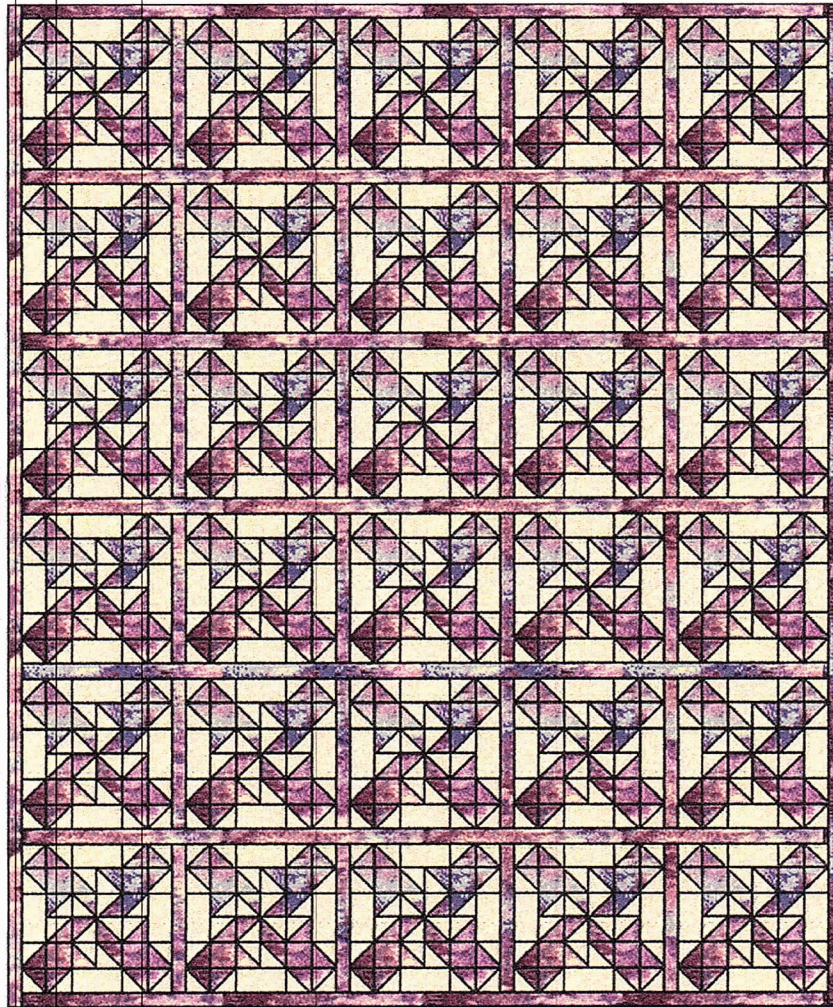
Next piece the block as shown at left. Make rows first, alternating pressing directions with each addition. Sew the rows together, again alternating pressing directions. That's all there is to this one! :o) ...on to Page 2!

©Aug13200 Marcia Hohn

Traditional Block

<http://www.quilterscache.com>

Mrs. Morgan's Choice - Page 2



No wonder this was Mrs. Morgan's Choicewhat a nice and easy block!...shown here as a simple 5 x 6 with sashings...

Happy Quilting Once Again!

Marcia :o)

Here's one that Karen made!

Lisa's!
Belinda's!

** Supplies List **



Color 1

Color 1 needs: one 2-1/2" x 10" strip AND one 2-7/8" x 34-1/2" strip



Color 2

Color 2 needs: one 2-1/2" x 18" strip AND one 2-7/8" x 34-1/2" strip

To the Patterns or The Quilter's Cache

©Aug13200 Marcia Hohn

Page 1

Traditional Block

<http://www.quilterscache.com>