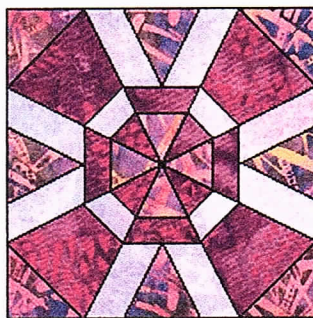


April 2016
Paper Pieced
Blue and White

Olympia Variation

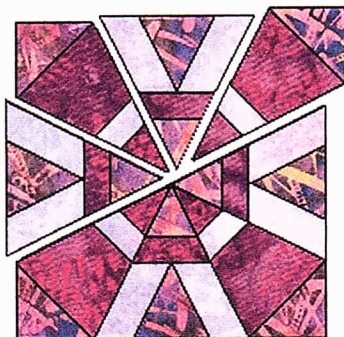
This makes a 12" block
and is paper pieced!

**This is an original
pattern. Please abide by
the Terms and
Conditions of use! :o)**

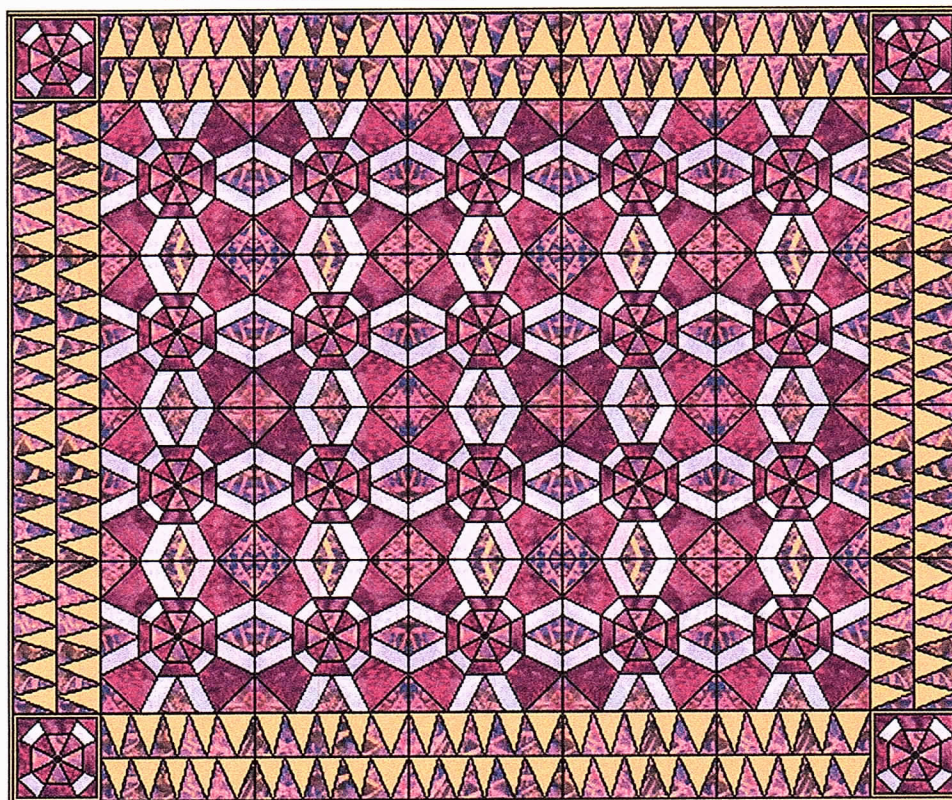


[Click here for the
templates!](#)

The first thing that I would recommend that you do, is go to the [Practice Paper Piecing Page](#). When you feel comfy with paper piecing, come on back and try an Olympia Variation Block! You will need to print out four copies of the template page per block you want to make on very lightweight paper. FQ's will be fine!



After your units are all paper pieced...join them into block halves as shown at left. Join the two halves and the block is done!



Here on its side is a quilt of four blocks by five with a pieced border!

Happy Quilting!

Marcia :o)

[Here's Ruthie's!](#)

[Sue's](#)

© <http://www.quilterscache.com/> / mhohn
Olympia Variation

Transfer these to
another sheet of paper
and ADD 1/4" seam
allowances around
outside of these units!

